

Filters

Series MC

Ports G1/4, G3/8 and G1/2

Modular

Metal bowl and bayonet-type mounting



Filters with filtering elements which are different from the standard ones, as well as further drainings of condensate can be ordered on request (see the coding example).

Series MC filters are available with ports G1/4, G3/8 and G1/2.

Bowls are made of metal with a transparent sight glass and have a condensate drain valve which can provide either a manual or semi-automatic function.

GENERAL DATA

Construction	compact modular with filtering element in HDPE
Materials	zama, NBR, tecnopolymer
Ports	G1/4 G3/8 G1/2
Max condensate capacity	cm ³ 28 cm ³ 72 cm ³ 72
Weight	kg 0,339 kg 0,718 kg 0,688
Mounting	vertical in-line or wall-mounting
Operating temperature	-5°C ÷ 50°C at 10 bar (with the dew point of the fluid lower than 2°C at the min. working temperature)
Porosity of filtering element	25 µm standard - 5 µm upon request
Draining of condensate	manual - semi automatic standard
Finishing	enamelled
Operating pressure	with standard drain and protected depressurisation 0,3 ÷ 16 bar with depressurisation 0,3 ÷ 10 bar with automatic drain 1,5 ÷ 12 bar for G3/8 and G1/2
Nominal flow	see graphs

CODING EXAMPLE

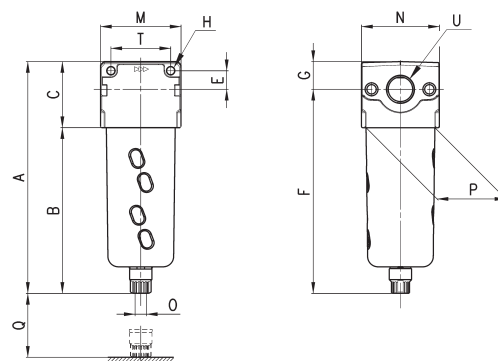
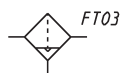
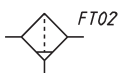
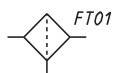
MC	2	02	-	F	0	0
----	---	----	---	---	---	---

MC	SERIES
2	SIZE: 1 = G1/4 2 = G3/8 - G1/2
02	PORTS: 04 = G1/4 38 = G3/8 02 = G1/2
F	F = FILTER
0	FILTERING ELEMENT: 0 = 25µm (standard) 1 = 5µm
0	DRAINING OF CONDENSATE: 0 = normal - semiautomatic (standard) 3 = automatic drain (only for G3/8 and G1/2) 4 = depressurisation (only G1/4) 5 = depressurisation, protected 8 = no drain, port 1/8 For condensate drains see the section 3/5.10

Filters Series MC



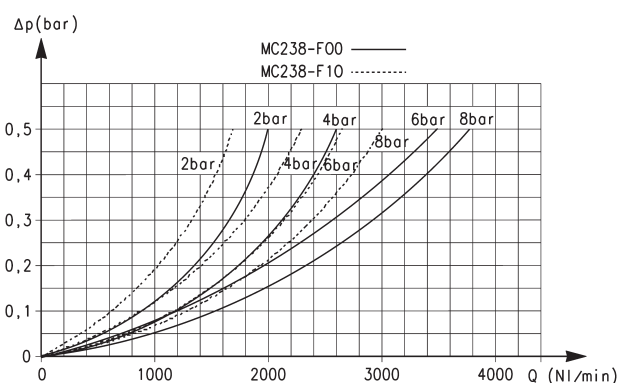
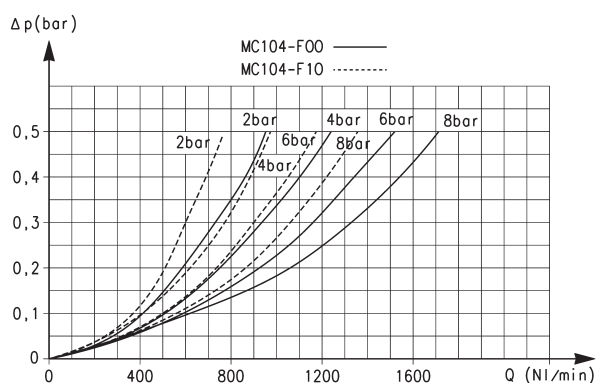
FT01 = filter without drain with threaded port
 FT02 = filter with semiautomatic manual drain
 FT03 = filter with automatic drain



DIMENSIONS

Mod.	A	B	C	E	F	G	H	M	N	O	P	Q	T	U
MC104-F00	143	102	41	11	126,5	16,5	4,5	45	45	G1/8	37	58	35	G1/4
MC238-F00	184	133	51	14	163	21	5,5	62	60	G1/8	53	72	46	G3/8
MC202-F00	184	133	51	14	163	21	5,5	62	60	G1/8	53	72	46	G1/2

FLOW DIAGRAMS FOR FILTERS SERIES MC, G1/4 - G3/8 PORTS



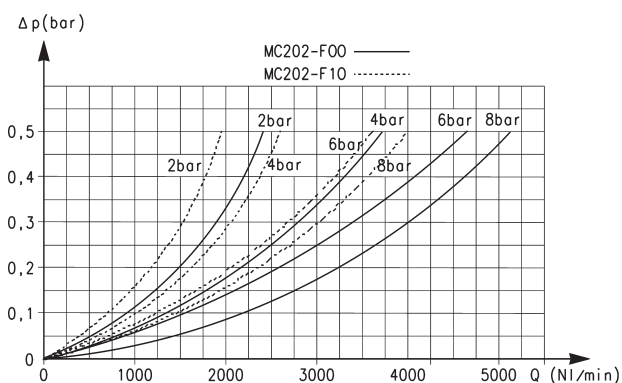
Flow diagram for models: MC238-F00 and MC238-F10

ΔP = Pressure drop
Q = Flow

Flow diagram for models: MC104-F00 and MC104-F10

ΔP = Pressure drop
Q = Flow

FLOW DIAGRAM FOR FILTERS SERIES MC, G1/2 PORTS



Flow diagram for models: MC202-F00 and MC202-F10

ΔP = Pressure drop
Q = Flow